

# younique™

## CLASSIC CATALOGUE

APRIL-AUGUST 2017 IRE



We are proud to say this catalogue

features only **Younique Presenters.**



<b>LINE</b> EXTENSIONS .....	p1
<b>SKIN</b> .....	p3
<b>FACE</b> .....	p9
<b>LIPS</b> AND EYES .....	p21
<b>BODY</b> .....	p43

<b>TOOLS</b> .....	p47
<b>COLLECTIONS</b> .....	p53
<b>GET THE LOOKS</b> .....	p59
<b>INDEX</b> .....	p63

We're constantly in awe of the stories we hear about how Younique has changed lives, and we know that is thanks to you, our customers and Presenters. We strive each day to find new ways to uplift, empower, and validate women everywhere, and we couldn't do it without you.

This year, we're focusing on ways to help you flourish, both personally and professionally, through #YFlourish2017. Throughout 2017, we'll be launching new products and programs designed to help you grow, enhance your beauty, and showcase your individuality—and we want to hear how you plan to flourish, too. We'd love to hear your stories through social media with #YFlourish2017.

Since our last catalogue, we've broken records, hit major milestones, and launched into new markets. More than 11,000 Presenters joined our Y-Family on January 2 alone, and soon after, we passed the 600,000 Presenter mark. We've expanded into Hong Kong and Italy, and we're excited to watch those markets flourish.

As you dive into this beautiful version of the catalogue, you'll find new products as well as reliable favourites—including the completely reformulated Moodstruck 3D Fiber Lashes+, which sold more than 90,000 units on its first day. We hope that our products help you feel beautiful, inside and out. Here's to a new year filled with flourish and fulfillment!



#### THE YOUNIQUE LOVE IT GUARANTEE

We're so confident that you'll love Younique that we guarantee your satisfaction with, and the quality of, all of our products. We've crafted our product guarantee policy to make purchasing Younique products easy and worry-free. If you don't love it, we've got you covered!

**DEREK MAXFIELD**  
Founder & CEO

**MELANIE HUSCROFT**  
Co-Founder & CVO



## LINE EXTENSIONS

Splurge Cream Shadow **p23**  
Moodstruck Opulence Lipstick **p35**  
Moodstruck Minerals Lucrative Lip Gloss **p39**  
Moodstruck Minerals Stiff Upper Lip Lip Stain **p41**

## BEST SELLERS

Younique Royalty **p3**  
Touch Mineral Liquid Foundation **p11**  
Touch Mineral Skin Perfecting Concealer **p12**  
Touch Glorious Face Primer **p13**  
Splurge Cream Shadow **p23**  
Moodstruck Addiction Shadow Palette **p26**  
Moodstruck Splash Liquid Lipstick **p33**  
Moodstruck Opulence Lipstick **p35**  
Moodstruck Minerals Stiff Upper Lip Lip Stain **p41**

## NEW RELEASES

Touch à la mode Cream to Powder Luminizer **p15**  
Touch à la mode Powder Luminizer **p15**  
Touch à la mode Cream Luminizer **p16**  
Touch Behold Setting Spray **p19**  
Touch Behold Translucent Setting Powder **p20**  
Moodstruck Brow Obsession Palette **p28**  
Powder/Concealer Brush **p50**  
Brow Artist Brush **p50**  
Fan Brush **p50**

## NEW COLLECTIONS

Eye of the Beholder **p55**  
The Full Flourish **p55**  
Glamour Grab Bag **p56**  
About Face **p56**  
Beauty Sleep **p57**  
Clean Slate **p57**



SKIN CARE FIT FOR  
**ROYALTY**

NURTURE, PROTECT, AND REVIVE YOUR SKIN





### YOUNIQUE ROYALTY PORE PURIFYING CLEANSER

42 €

Cleanse, nourish, and exfoliate normal to oily skin with essential vitamins.



### YOUNIQUE ROYALTY MOISTURE BOOSTING GENTLE CLEANSER

42 €

Cleanse, hydrate, and replenish normal to dry skin with essential vitamins.



### YOUNIQUE ROYALTY SHINE CLEANSING CLOTHS

21,50 €

Removes makeup while nourishing skin with vitamins and extracts.



### YOUNIQUE ROYALTY TIME CORRECTING NIGHT CREAM

53 €

Provides ultra hydration and moisture retention, restoring your skin for beauty sleep fit for a queen.



### YOUNIQUE ROYALTY UPLIFT BEAUTY SERUM

70 €

Minimizes the appearance of fine lines and wrinkles for a more youthful glow.



### YOUNIQUE ROYALTY ROSE WATER TONING SPRITZ

31,50 €

Refresh for a light and fragranced finish.



### YOUNIQUE ROYALTY INSTANT LIFTING SERUM

70 €

Moisturises and gives the appearance of firmer skin.



### YOUNIQUE ROYALTY RENEWING DAY CREAM

45 €

Hydrates and protects normal to oily skin with SPF 20, vitamins C and E, Resveratrol, and Baobab oil.



### YOUNIQUE ROYALTY HYDRATING DAY CREAM

45 €

Moisturises and protects normal to dry skin with SPF 20, vitamins C and E, Resveratrol, and Baobab oil.



### YOUNIQUE ROYALTY DIVINE DAILY MOISTURIZER

42 €

Hydrates and nourishes for radiant skin.



### YOUNIQUE ROYALTY DETOXIFYING MASK

53 €

Oxygenates and helps to detoxify the skin by absorbing impurities with a foaming, tingling, luxurious sensation.



LUXURY AND LIGHT YOU CAN  
**TOUCH**

---

FLAWLESS COVERAGE FOR YOUR FACE



To get presenter's look go to page 90

Scarlet

Organza

Velour

Taffeta

Chiffon

Satin

Cashmere

Velvet


Charmeuse

Chenille

Cypress

Suede

Georgette



Scarlet

Organza

Velour

Taffeta

Chiffon

Satin

Cashmere

Velvet


Charmeuse

Chenille

Cypress

Suede

Georgette






OFF TO A SMOOTH START

TOUCH MINERAL LIQUID FOUNDATION

42 €

This smooth foundation goes on liquid and dries to a soft, powdery finish while optical diffusers blur imperfections. Each shade is also available as a corresponding Touch Mineral Concealer, Pressed Powder, and Cream Foundation.

p11



DITCH BLEMISHES FOR BEAUTY

TOUCH MINERAL SKIN PERFECTING CONCEALER

31 €

Blend away imperfections with this satin-finish concealer that lasts and lets your natural beauty shine through. The lightweight, full-coverage shades correspond to our Touch Mineral Foundations.

p12



# PRIMED FOR PERFECTION



DON'T SKIP THIS STEP IN YOUR PREP

## TOUCH GLORIOUS FACE PRIMER

42 €

Give your day—and your face—a nice, smooth start. This velvety soft primer preps your skin for makeup coverage that will stay flawless.



## MOODSTRUCK MINERALS CONCEALER

31,50 €

Leaves a silky, powder-soft finish.



## A. TOUCH MINERAL CREAM FOUNDATION

34,50 €

Supple, lightweight cream foundation provides radiant, even coverage.

## B. TOUCH MINERAL PRESSED POWDER FOUNDATION

34,50 €

Polishes off your complexion for a lasting, breathable, flawless finish.

Scarlet	Organza	Velour	Taffeta	Chiffon	Satin	Cashmere
Velvet	Charmeuse	Chenille	Cypress	Suede	Georgette	

## TOUCH MINERAL FOUNDATION SET OF 2

65 €

Get any combination of cream and pressed powder foundations.



## BB FLAWLESS COMPLEXION ENHANCER

42 €

Tints and moisturises skin with a lightweight finish.



## HIGHLIGHT AND CONTOUR SET

97 €

Bring out your best with two BB Flawless Complexion Enhancers in your choice of shades, plus a set of reusable Blending Buds for seamless highlighting and contouring.



À la mode is like having lighting in a bottle (and tube and compact). Achieve a vibrant, illuminated finish with a line of highlighters that allow you to build your own level of light. The extremely versatile and blendable cream, cream to powder, and powder Luminizers will have you turning heads and taking the spotlight wherever you go.

## TOP OFF YOUR LOOK WITH YOUR OWN BEST LIGHT



### TOUCH À LA MODE CREAM TO POWDER LUMINIZER

42 €

Precise, on-the-go highlighting that applies like a cream but feels like powder. Available in five shades.



### TOUCH À LA MODE POWDER LUMINIZER

42 €

A lightweight, light-diffusing pressed powder gives your skin a radiant finish. Available in five shades.



### TOUCH À LA MODE CREAM LUMINIZER

42 €

Creamy, buildable lighting in a bottle blends easily for a radiant and silky-smooth finish. Available in five shades.



### LUMINIZER SET OF 3

113 €

Select one of each: Cream, Cream to Powder, Powder.

# GET SCULPTED



## SCULPTING TRIO

53 €

Highlight and contour for a defined, sculpted look.

LIGHT



If your foundation shade is Scarlet, Organza, Velour, or Taffeta, try Light.

MEDIUM



If your foundation shade is Chiffon, Satin, or Cashmere, try Medium.

DARK



If your foundation shade is Velvet, Chameuse, Chenille, Cypress, Suede, or Georgette, try Dark.



Sunset

Malibu

Hermosa

## BEACHFRONT BRONZER

34,50 €

Half matte and half shimmer for a summery, golden glow.

## MOODSTRUCK MINERALS PRESSED BLUSHER

31,50 €

Highly pigmented, providing a blushing glow.



Scandalous

Sophisticated

Stunning

Seductive

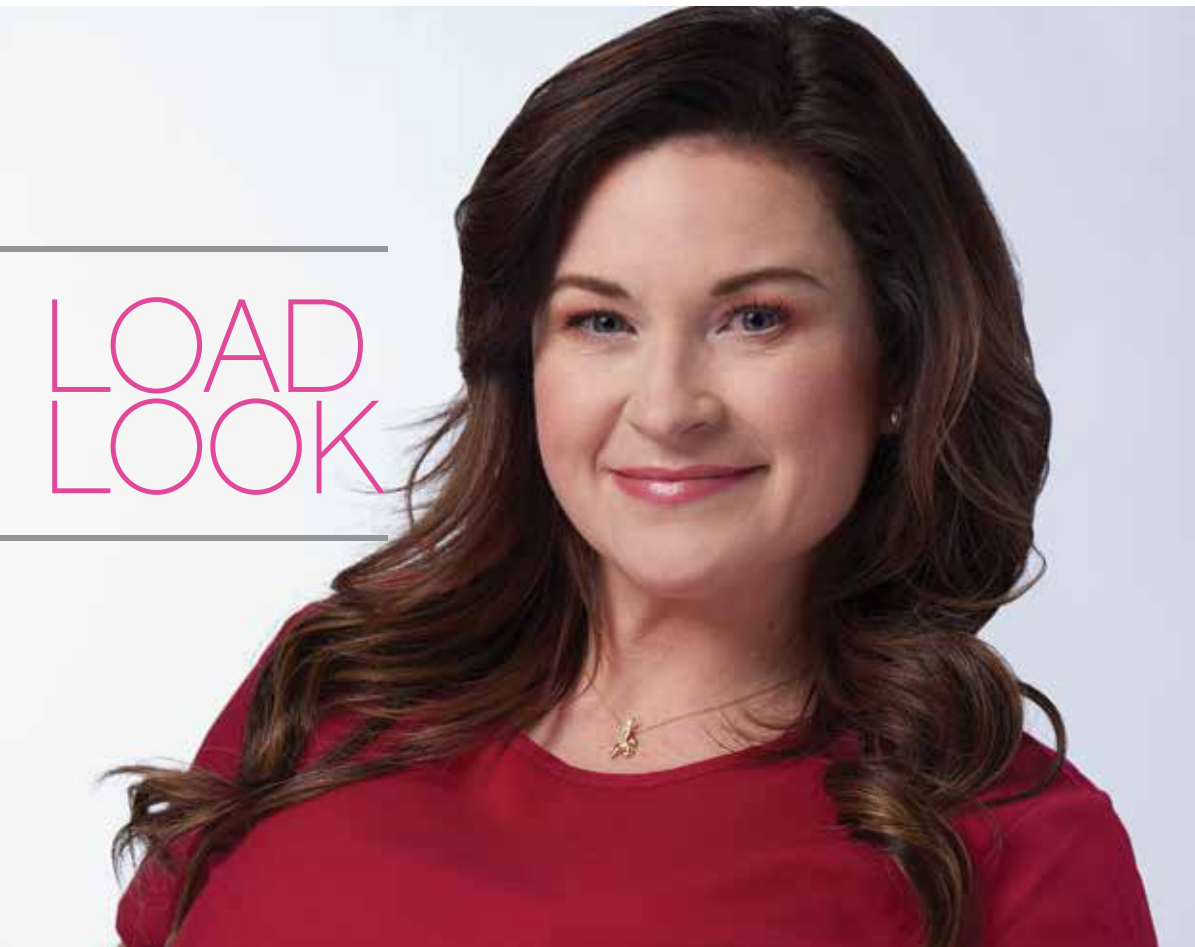
Sweet





LOCK &  
YOUR

LOAD  
LOOK



### TOUCH BEHOLD SETTING SPRAY\*

42 €

Refresh and reset makeup throughout the day for a fresh, flawless finish under extreme conditions.

Yunique's Touch Behold Setting Spray effortlessly locks and loads your look so you're ready to take on the world. Our ultrafine, non-sticky mist sets makeup while hydrating, helping you keep your face in place all day long. Mist on throughout the day to refresh and reset makeup, or use as a primer for a refining, matte look.

\* COMING SOON



### BEHOLD SET OF 2

76 €

One of each: Touch Behold Setting Spray,\* Touch Behold Translucent Setting Powder.

### TOUCH BEHOLD TRANSLUCENT SETTING POWDER

42 €

Create a soft-focus effect that provides a flawless, photo-ready finish all day long.

Our weightless translucent powder works with any makeup, skin type, and skin tone—no shade-matching needed. Set makeup and subtly blur the look of fine lines and imperfections with sheer natural coverage that won't settle into lines or pores. Use as the finishing touch to help keep makeup in place, or wear directly on skin for a softening, matte look.

BE BOLD. BE YOU. BE

# MOODSTRUCK

---

EYE AND LIP COLOURS FOR EVERY MOOD





# MORE MATTE MAGIC



THE EYES HAVE IT

SET OF 3

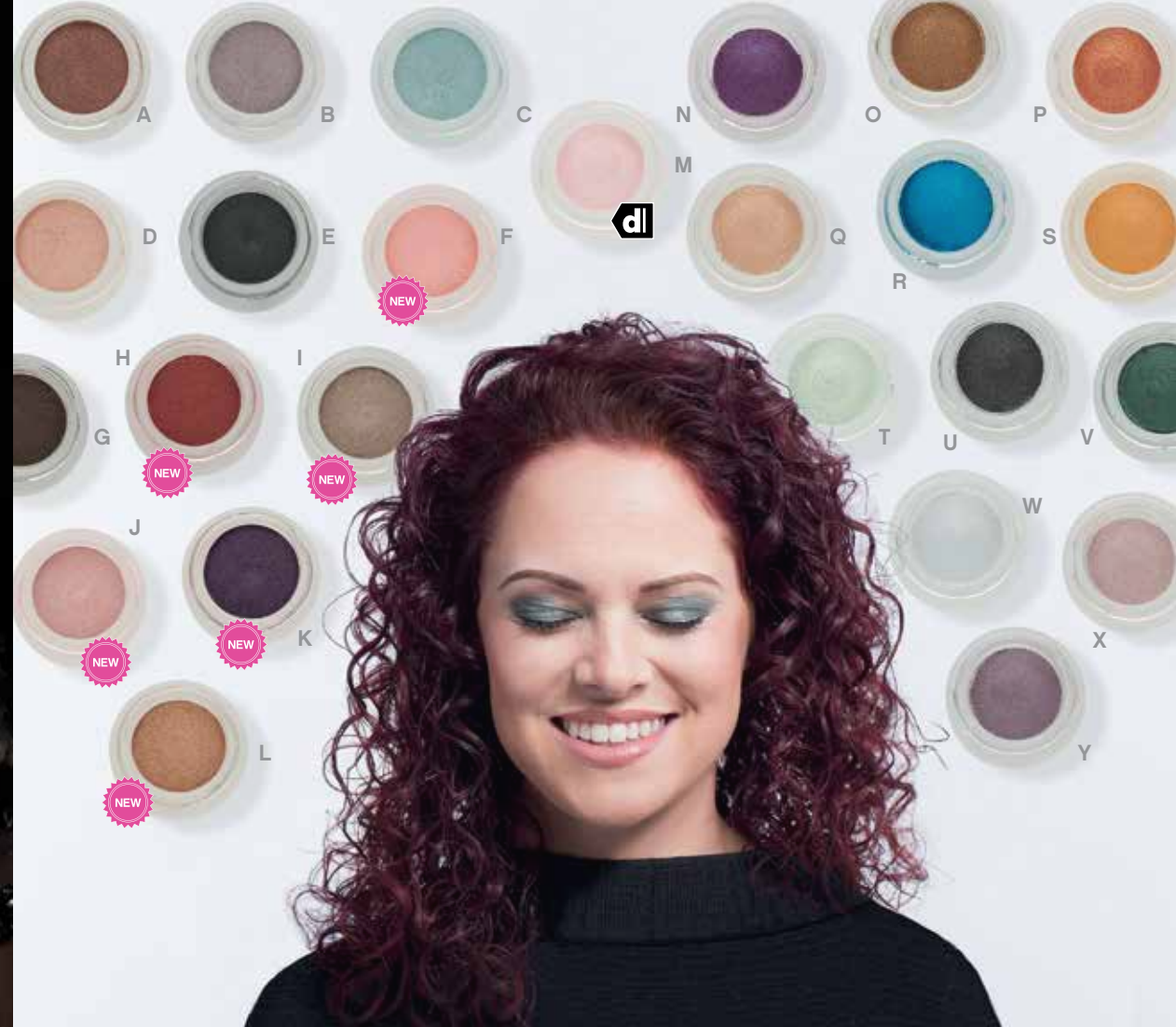
75 €

A SPLURGE YOU DESERVE

SPLURGE CREAM SHADOW

28 €

Take your eye looks to a whole new level with Splurge Cream Shadow, luxurious shadows fit for wherever the day takes you. Shimmer Splurge Cream Shadows are creamy, airy, and light, while matte Splurge Cream Shadows are dense yet velvety smooth and dry to a soft powder.



## 6 NEW COLOURS

MATTE

A. Faithful  
B. Happy  
C. Amused  
D. Victorious  
E. Magnificent  
F. Bittersweet - Mar '17

G. Proud  
H. Unapologetic - Jul '17  
I. Unfazed - May '17  
J. Jubilant - Jun '17  
K. Rapturous - Aug '17  
L. Grateful - April '17

SHIMMER

M. Hopeful  
N. Majestic  
O. Tenacious  
P. Defiant  
Q. Elegant  
R. Whimsical  
S. Extravagant

T. Charming  
U. Skeptical  
V. Assertive  
W. Dreamy  
X. Dainty  
Y. Noble



# MATCH YOUR MOOD

## MATTES



## SHIMMERS



### MOODSTRUCK MINERALS PIGMENT POWDER

13,50 €

Matte colours for a soft to bold look. Subtle shimmer for eyes that sparkle.

### MOODSTRUCK MINERALS PIGMENT POWDER SET OF 4

48,50 €

### MOODSTRUCK EYE PRIMER

24 €

Primes your eyes for smoother, longer-wearing, and truer colour.

## PALETTE 1



### SET OF 3

140 €

## PALETTE 2



## PALETTE 3



## PALETTE 4



## PALETTE 5



### MOODSTRUCK ADDICTION SHADOW PALETTE

53 €

Palettes 1 through 4 boast seven matte, pearl, and shimmer finishes. Palette 4 is filled with earthy browns and blues, and the one-of-a-kind Palette 5 offers reflective metallic and transforming, prismatic jewel tones.



## MOODSTRUCK PRECISION PENCIL EYELINER

16 €

Smooth, easy application in bold and classic colours.

SET OF 3

43 €

Any eyeliners or lip liners.\*

SET OF 10

135 €

Any eyeliners or lip liners.\* Includes free sharpener.

ALL 21 EYELINERS AND LIP LINERS

250 €

Includes free sharpener.

\* See lip liners p38.

## MOODSTRUCK PRECISION LIQUID EYELINER

23 €

Versatile, bold, and stays in place until you say when.

SET OF 5

101 €

All five liquid eyeliners.



Blond



Brunette



Dark Brunette/Black



## BROWS THAT WOW

### MOODSTRUCK BROW OBSESSION PALETTE

42 €

Get five versatile products in one mirrored compact: light and dark sculpting powders, matte and shimmer highlighters, and a setting wax to keep your brows set to stun. Available in three shades: Blond, Brunette, Dark Brunette/Black.





## MOODSTRUCK PRECISION BROW LINER

20 €

Fine-tipped pencil mimics the appearance of tiny hairs. Brush gently shapes hairs for perfectly aligned brows.



## MOODSTRUCK PRECISION BROW GEL

20 €

Tames and fills in brows.



## BROW STENCILS

10 €

Shape and fill in brows for a bombshell look.

## MOODSTRUCK PRECISION BROW GEL AND LINER SET

37 €

Choose any combination of shades of brow gel and brow liner.





**BRAND NEW**  
**FORMULA**

**SAME**  
**LUSCIOUS**  
**LASHES**

**MOODSTRUCK 3D FIBER LASHES+**  
**31,50 €**

Built from the ground up, the all-new, wholly re-engineered Moodstruck 3D Fiber Lashes+ will boost your lash look like never before. We tossed out the old formula and started from scratch, and the result is a product that is built to last. See up to a 500% increase in average volume\* with your first coat—and you don't have to stop there. Whether you're feeling subtle or sassy, defiant or classy, the new Moodstruck 3D Fiber Lashes+ will help you go wherever your mood takes you.



\* Averaged results observed in independent laboratory testing, when compared against bare lashes.



BRIGHT

BOLD



ADD POWER TO YOUR PUCKER

MOODSTRUCK SPLASH LIQUID  
LIPSTICK

29 €

Let your lips do the talking with matte liquid lipsticks that range from fresh orchid to true crimson to daring navy. These rich yet airy lipsticks will leave you feeling brave and bold.



SET OF 3

78 €



# 4 NEW COLOURS



## LUXURIOUS LIPS

### MOODSTRUCK OPULENCE LIPSTICK

20 €

Pamper your pout with full-coverage wear that won't let you fade away into the background. These smooth colours in matte and pearl finishes glide on effortlessly and stay vibrant and in place.

Set of 3

54 €





Set of 5  
105 €

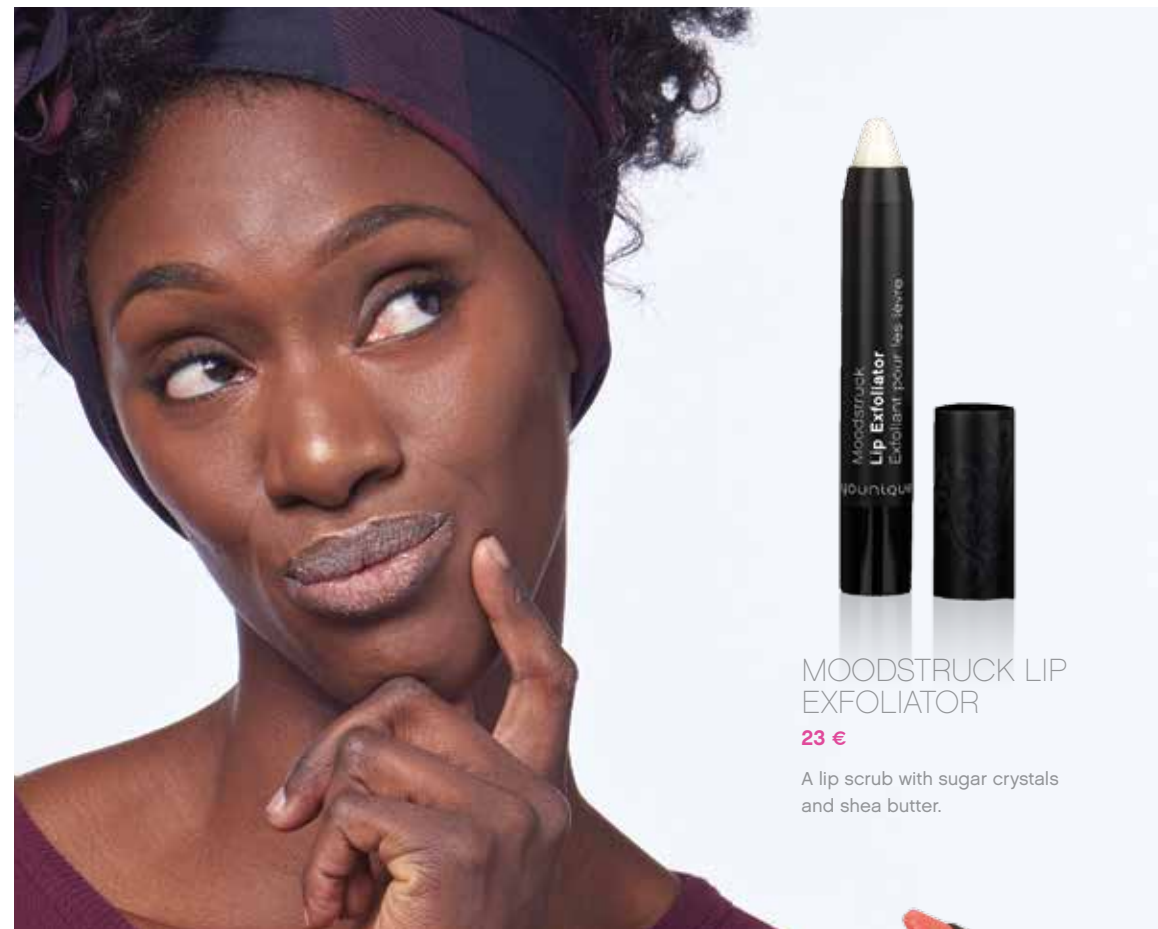


## LIP BONBONS TINTED LIP BALM

24 €

A treat for your lips, specially formulated with five nourishing oils.

- |                         |                    |
|-------------------------|--------------------|
| A. Vanilla Milkshake    | D. Cherry Cobbler  |
| B. Raspberry Cheesecake | E. Red Velvet Cake |
| C. Chocolate Truffle    |                    |



## MOODSTRUCK LIP EXFOLIATOR

23 €

A lip scrub with sugar crystals and shea butter.

## MOODSTRUCK PRECISION PENCIL LIP LINER

16 €

Waterproof, smudge-proof liner for lips that pop.

### SET OF 3

43 €

Any lip liners or eyeliners.\*

### SET OF 10

135 €

Any lip liners or eyeliners.\*  
Includes free sharpener.

## ALL 21 EYELINERS AND LIP LINERS

250 €

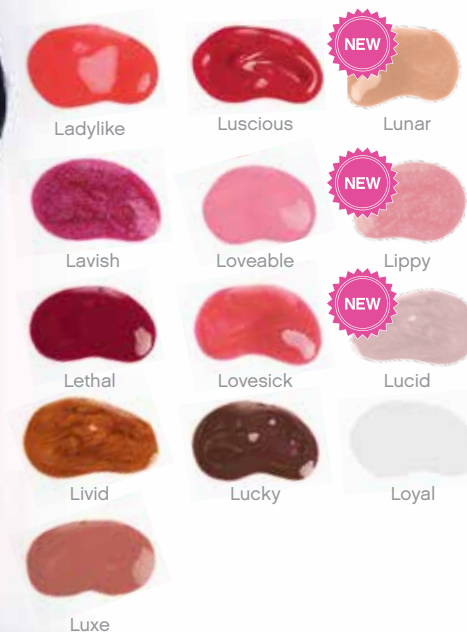
Includes free sharpener.

- |            |            |
|------------|------------|
| A. Popular | F. Prudent |
| B. Plush   | G. Perky   |
| C. Punchy  | H. Pompous |
| D. Posh    | I. Pouty   |
| E. Primal  | J. Peachy  |



\* See eyeliners p27.

# 3 NEW COLOURS



THE PERFECT  
ADDITION TO OUR  
CLASSIC COLOURS

COLOUR YOUR  
KISSER

MOODSTRUCK MINERALS  
LUCRATIVE LIP GLOSS

16 €

Lasting, moisturising shine.

SET OF 3

43 €





Speechless



Shameless



Sucker-Punched



Sensational



Serendipitous



Smoldering

# 6 NEW COLOURS

LIPS THAT LAST

MOODSTRUCK MINERALS STIFF UPPER LIP LIP STAIN

24 €

Get vibrant colour that stays put with this lip stain in smooth, matte finishes. Swipe on your stain and go about your day—your colour will stick with you. Now available in six new colours.



SET OF 3

65 €



Sappy



Saucy



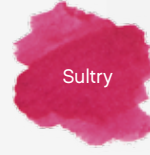
Shy



Skittish



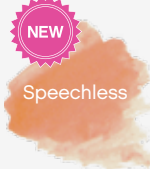
Sleek



Sultry



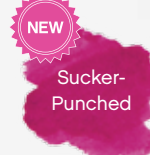
Savvy



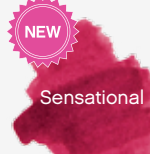
Speechless



Shameless



Sucker-Punched



Sensational



Smoldering



Serendipitous





A BEAUTIFUL TAN WORTHY OF A

# BEACHFRONT

---

GET GLOWING, GOLDEN SKIN





#### A BEACHFRONT SELF-TANNING BODY LOTION

42 €

Slowly builds colour for a bronzing, beach-babe look.

#### B BEACHFRONT SELF-TANNING SPRAY

27 €

Mist on a natural, sunless summer glow with a spray every day.

#### C BEACHFRONT BODY BRONZER

42 €

Lightly tints the skin for a glowing, sun-kissed look. Available in three shades.



Sunset



Hermosa



Malibu

#### D BEACHFRONT BODY APPLICATOR

21,50 €

Helps provide a smooth and streak-free bronzer and tanner application. See [p49](#).

#### BEACHFRONT SELF-TANNING SPRAY SET OF 2

42 €



FILL YOUR ARSENAL OF  
**TOOLS**

---

BLEND, BRUSH, AND BUILD YOUR LOOK







### A BEACHFRONT BODY APPLICATOR

21,50 €

Helps provide a smooth and streak-free bronzer and tanner application.

### B BLENDING BUDS

27 €

Blends foundation, primer, and blusher for an airbrushed finish. Includes two buds.

### C PRECISION TWEEZERS

10 €

Perfects your look for a polished finish.

### D LIP BRUSH

27 €

Retractable fine tip allows for precise application of all lip products.

### E PRECISION EYELASH CURLER

10 €

Curls lashes with ultimate precision.

### F PRECISION PENCIL SHARPENER

8 €

Sharpens lip liners and pencil eyeliners to a rounded tip.

### POWDER/ CONCEALER BRUSH

45 €

Applies powder and concealer to small and large areas for a smooth, airbrushed finish. Made with synthetic micro-crystal fibers.



### FAN BRUSH

27 €

Lightly dusts powder foundations, setting powders, bronzers, and luminizers for an airy, lightweight finish. Made with synthetic micro-crystal fibers.



### BROW ARTIST BRUSH

20 €

Line and sculpt stunner brows with ultra-thin angled and flat ends. Made with synthetic micro-crystal fibers.



### FACE BRUSH SET

189 €

- Powder Puff Brush
- Blusher Brush
- Foundation Brush
- Concealer Brush
- Powder/Concealer Brush
- Liquid Foundation Brush
- Contour Brush

### COMPLETE BRUSH SET

353 €

- Powder Puff Brush
- Contour Brush
- Liner/Shader Brush
- Foundation Brush
- Crease Brush
- Deluxe Eye Brush
- Lash Comb/Brow Brush
- Liquid Foundation Brush
- Powder/Concealer Brush
- Lip Brush
- Angled Shadow/ Sponge Brush
- Cream Shadow Brush
- Concealer Brush
- Fan Brush
- Brow Artist Brush
- Blusher Brush

PLUS A BRUSH ROLL BAG!

### EYE BRUSH SET

115 €

- Deluxe Eye Brush
- Liner/Shader Brush
- Crease Brush
- Cream Shadow Brush
- Angled Shadow/Sponge Brush
- Brow Artist Brush
- Lash Comb/Brow Brush



#### A FOUNDATION BRUSH

21,50 €

Applies foundation for a smooth finish.

#### B BLUSHER BRUSH

27 €

Perfectly angled for precise placement of blush and bronzer.

#### C POWDER PUFF BRUSH

34,50 €

Soft and absorbent for perfect application of foundation, concealer, and bronzer.

#### D CONTOUR BRUSH

34,50 €

Angled and padded ends allow for precise application and blending of wet or dry products. Pairs perfectly with the Sculpting Trio.

#### E CONCEALER BRUSH

13 €

Covers imperfections beautifully for even coverage.

#### F LIQUID FOUNDATION BRUSH

34,50 €

Place liquid in recessed area for seamless, controlled foundation application.

#### G LINER/SHADER BRUSH

19,50 €

Creates smooth, even lines, and blends pigments for a diffused finish.

#### H DELUXE EYE BRUSH

18,50 €

Uniformly covers lids for easy colour application.

#### I CREASE BRUSH

16 €

Applies color with precise, deliberate strokes.

#### J CREAM SHADOW BRUSH

16 €

Use with cream shadow for smooth blending and creaseless application.

#### K ANGLED SHADOW/SPONGE BRUSH

16 €

Applies and blends shadows and pigments with precision.



A woman with short dark hair, wearing a white long-sleeved top with a gold beaded collar, is smiling and holding two handbags. In her right hand, she holds a purple and black bag with a white logo that says 'youlove'. In her left hand, she holds a black textured bag with a similar logo. The background is a plain, light color.

IT'S IN THE BAG.

# COLLECTIONS

A FEW OF YOUR FAVOURITES AT INCREDIBLE SAVINGS





## SAVINGS OF 15% EYE OF THE BEHOLDER

187 €

The eyes have it! Perfect your brows with our new Brow Obsession Palette and enhance your eyes with the Addiction Shadow Palette of your choice, our newly reformulated 3D Fiber Lashes+, and more.

- 1 Moodstruck Brow Obsession Palette
- 1 Moodstruck Precision Brow Liner
- 1 Moodstruck Addiction Shadow Palette
- 1 Moodstruck Precision Pencil Eyeliner or Lip Liner
- 1 Moodstruck 3D Fiber Lashes+
- 1 Moodstruck Opulence Lipstick
- 1 Angled Shadow/Sponge Brush
- 1 Brow Artist Brush
- 1 Collection Bag—your choice of style



## SAVINGS OF 15% GLAMOUR GRAB BAG

212 €

Cover all your beauty bases with this fundamental collection. Choose your favourite shades from our popular Addiction Shadow Palette and Splash Liquid Lipstick, and try our hottest new releases, including à la mode Powder Luminizer and the newly reformulated 3D Fiber Lashes+.

- 1 Touch Mineral Pressed Powder Foundation
- 1 Touch Mineral Liquid Foundation
- 1 Touch à la mode Powder Luminizer
- 1 Moodstruck Precision Pencil Eyeliner
- 1 Moodstruck Addiction Shadow Palette
- 1 Moodstruck 3D Fiber Lashes+
- 1 Moodstruck Splash Liquid Lipstick
- 1 Collection Bag—your choice of style



## SAVINGS OF 16% THE FULL FLOURISH

233 €

This extensive collection kicks your beauty basics up a notch with beautiful colours for skin, cheeks, eyes, and lips. Choose your favourite shades from our best-selling products and try our hottest new releases, including à la mode Cream to Powder Luminizer and the newly reformulated 3D Fiber Lashes+.

- 1 Touch Mineral Liquid Foundation
- 1 Touch à la mode Cream to Powder Luminizer
- 1 Moodstruck Minerals Pressed Blusher
- 1 Moodstruck Precision Pencil Eyeliner
- 1 Splurge Cream Shadow
- 1 Moodstruck Minerals Pigment Powder
- 1 Moodstruck 3D Fiber Lashes+
- 1 Lip Bonbons Tinted Lip Balm
- 1 Moodstruck Lip Exfoliator
- 1 Moodstruck Minerals Stiff Upper Lip Lip Stain
- 1 Collection Bag—your choice of style



## SAVINGS OF 18% ABOUT FACE

162 €

Enhance your natural beauty with complete complexion coverage. Our much-requested new luminizer and setting powder will help you glow and give your look lasting power.

- 1 Touch Glorious Face Primer
- 1 Touch Mineral Skin Perfecting Concealer
- 1 Touch Mineral Liquid Foundation
- 1 Touch à la mode Cream Luminizer
- 1 Touch Behold Translucent Setting Powder
- 1 Collection Bag—your choice of style



## SAVINGS OF 22% CLEAN SLATE

146 €

Start your day like royalty with our daytime skin care collection. With the right mix of cleansing, moisturising, and pampering from the Younique Royalty product line, you'll be ready to put your best face forward.

- 1 Younique Royalty Cleanser (Pore Purifying or Moisture Boosting Gentle)
- 1 Younique Royalty Rose Water Toning Spritz
- 1 Younique Royalty Instant Lifting Serum
- 1 Younique Royalty Day Moisturizer (Divine Daily Moisturizer, Hydrating Day Cream, or Renewing Day Cream)
- 1 Younique Royalty Collection Bag



## SAVINGS OF 13% BEAUTY SLEEP

186 €

Replenish your skin while you rest with our nighttime skin care set. Our Younique Royalty products will prepare you to sleep like a queen!

- 1 Younique Royalty Cleanser (Pore Purifying or Moisture Boosting Gentle)
- 1 Younique Royalty Detoxifying Mask
- 1 Younique Royalty Uplift Beauty Serum
- 1 Younique Royalty Time Correcting Night Cream
- 1 Younique Royalty Collection Bag

**defend**  
innocence

The true character of „  
a society is revealed in  
how it treats its children.

- Nelson Mandela

Childhood innocence is worth defending, and the epidemic of sexual abuse is neither acceptable nor inevitable.

At Defend Innocence, we teach parents and caregivers how they can protect their children from the dangers of sexual abuse.

Start defending with us at [www.defendinnocence.org/start](http://www.defendinnocence.org/start)

the  
younique  
FOUNDATION

The Younique Foundation inspires hope in women who were sexually abused as children or adolescents by hosting them at a retreat, where they are uplifted by each other and learn skills that can help them find individual healing.

Through the Defend Innocence campaign, The Younique Foundation (TYF) educates parents and empowers them to protect their children from sexual abuse while leading a public dialogue to bring the epidemic of abuse to light. Learn more at [youniquefoundation.org](http://youniquefoundation.org)

PRODUCTS WITH THIS LOGO ARE DESIGNED TO  
RAISE AWARENESS FOR DEFEND INNOCENCE



# GET THE LOOKS

## COVER



### NICOLE (COVER)

**FACE:** Liquid Foundation (Taffeta), Powder Foundation (Velour), Perfecting Concealer (Velour), Mineral Concealer (Fierce), Blusher (Stunning).

**EYES:** Addiction 3 (Tickled, Determined), Liquid Eyeliner (Proper), Brow Palette (Brunette), and Fiber Lashes.

**LIPS:** Splash (Soulful).



### IFY (COVER)

**FACE:** Liquid Foundation (Suede), Powder Foundation (Cypress and Georgette), Perfecting Concealer (Cypress), Mineral Concealer (Fierce), Blusher (Scandalous)

**EYES:** Pigment (Giddy, Provoked), Splurge (Extravagant, Tenacious, Defiant), Addiction 2 (Peppy), Brow Liner(Dark), Brow Gel (Dark), and Fiber Lashes.

**LIPS:** Lipstick (Fortunate) and Lip Gloss (Lucky).



### LIANNE (COVER)

**FACE:** Liquid Foundation (Satin), Powder Foundation (Satin), Perfecting Concealer (Taffeta), Powder Luminizer (Lustrous, Pearly).

**EYES:** Addiction 1 (Elated and Zealous), Powder Luminizer (Pearly), Splurge (Defiant and Proud), Brow Liner (Medium), Brow Palette (Blond), and Fiber Lashes.

**LIPS:** Lip Liner (Pouty), Lipstick (Affluent), Lip Gloss (Luxe).

## SKIN



### VICTORIA P3

**FACE:** Powder Foundation (Taffeta), Perfecting Concealer (Taffeta), Sculpting Trio (Medium), and Blusher (Sweet).

**EYES:** Splurge (Victorious), Blusher (Sweet), Powder Foundation (Chenille), and Fiber Lashes.

**LIPS:** Bonbons (Cherry Cobbler).

## FACE



### TANYA P9

**FACE:** Liquid Foundation (Taffeta), Powder Foundation (Taffeta and Satin), Perfecting Concealer (Taffeta), Mineral Concealer (Fierce), Blusher (Seductive), Bronzer (Malibu), Cream to Powder Luminizer (Benevolent), and Powder Luminizer (Benevolent).

**EYES:** Splurge (Unapologetic and Bittersweet), Addiction 5 (Suspicious), Pencil Eyeliner (Proper), Brow Liner (Medium), Fiber Lashes, and Brow Palette (Brunette).

**LIPS:** Lip Liner (Pouty) and Lip Gloss (Luxe).



### LACEY P11

**FACE:** Liquid Foundation (Taffeta), Powder Foundation (Taffeta), Perfecting Concealer (Velour), Mineral Concealer (Fierce), Powder Luminizer (Lustrous), and Blusher (Seductive).

**EYES:** Splurge (Proud), Pigments (Daring and Provoked), Brow Liner (Medium), Fiber Lashes, and Brow Palette (Brunette).

**LIPS:** Lipstick (Well-To-Do), Lip Gloss (Luxe), and Lip Liner (Pouty).



### MICHELLE P12

**FACE:** Liquid Foundation (Taffeta and Velour), Powder Foundation (Taffeta and Satin), Perfecting Concealer (Velour), Blusher (Seductive), and Powder Luminizer (Benevolent).

**EYES:** Splurge (Proud), Pigments (Adorable), Addiction 1 (Brassy), Pencil Eyeliner (Prim), Liquid Eyeliner (Proper), Brow Liner (Medium), Fiber Lashes, and Brow Palette (Blond).

**LIPS:** Splash (Soulful), and Lip Gloss (Loyal and Lippy).



### JESSICA P13

**FACE:** Liquid Foundation (Satin), Perfecting Concealer (Taffeta), Powder Luminizer (Lustrous), and Blusher (Stunning).

**EYES:** Cream to Powder Luminizer (Pearly), Pigments (Adorable), Addiction 1 (Chipper, Forthright, and Zealous), Powder Luminizer (Lustrous), Fiber Lashes, and Brow Palette (Dark Brunette/Black).

**LIPS:** Lip Gloss (Luxe) and Lip Liner (Pouty).



### TINA P15

**FACE:** Liquid Foundation (Satin), Powder Foundation (Chiffon and Satin), Perfecting Concealer (Chiffon and Satin), Mineral Concealer, Behold Setting Powder, Cream Luminizer (Pearly), and Powder Luminizer (Pearly).

**EYES:** Addiction 4 (Arrogant and Brave), Fiber Lashes, and Powder Luminizer (Pearly).

**LIPS:** Cream to Powder Luminizer (Opaline).



### ANN P15

**FACE:** Liquid Foundation (Velour), Powder Foundation (Velour), Perfecting Concealer (Velour), Powder Luminizer (Benevolent), and Blusher (Sweet).

**EYES:** Splurge (Victorious), Pencil Eyeliner (Proper), Addiction 4 (Arrogant), Powder Luminizer (Benevolent), Brow Liner (Light), Brow Gel (Light), and Fiber Lashes.

**LIPS:** Lip Liner (Prudent and Pompous) and Splash (Sentimental).



### MELANIE P17

**FACE:** Liquid Foundation (Chiffon), Powder Foundation (Chiffon and Taffeta), Perfecting Concealer (Taffeta and Chiffon), Sculpting Trio (Medium), Bronzer (Malibu) Powder Luminizer (Lustrous), and Blusher (Sweet).

**EYES:** Splurge (Bittersweet), Addiction 4 (Tender, Secretive, and Brave), Addiction 3 (Tickled), Fiber Lashes, and Brow Palette (Blond).

**LIPS:** Lip Liner (Pouty), Lipstick (Conceited), and Bonbons (Chocolate Truffle).



### JESSICA P19

**FACE:** Liquid Foundation (Satin), Perfecting Concealer (Taffeta), Blusher (Stunning), and Powder Luminizer (Lustrous).

**EYES:** Splurge (Proud), Addiction 5 (Suspicious), Pigment Powder (Adorable), Addiction 1 (Chipper), Cream to Powder Luminizer (Pearly), Fiber Lashes, and Brow Palette (Dark Brunette/Black).

**LIPS:** Splash (Sensual).



### CHARMAINE P20

**FACE:** Liquid Foundation (Organza), Powder Foundation (Organza and Charmeuse), Perfecting Concealer (Organza and Scarlet), Behold Setting Powder, and Blusher (Sophisticated and Sweet).

**EYES:** Addiction 1 (Elated), Pigments (Angelic), Pencil Eyeliner (Pristine), Addiction 5 (Victorious), Blusher (Sophisticated), Fiber Lashes, Brow Gel (Medium), and Brow Liner (Medium).

**LIPS:** Lipstick (Peachy), Lip Gloss (Loyal), Bonbons (Chocolate Truffle).

## EYES AND LIPS



### LACEY P22

**FACE:** Liquid Foundation (Taffeta), Powder Foundation (Taffeta), Perfecting Concealer (Velour), Mineral Concealer (Fierce), Powder Luminizer (Lustrous), and Blusher (Seductive).

**EYES:** Splurge (Proud), Pigments (Daring and Provoked), Brow Liner (Medium), Fiber Lashes, and Brow Palette (Brunette).

**LIPS:** Splash (Soulful).



### SOED P23

**FACE:** Liquid Foundation (Chenille and Cashmere), Powder Foundation (Cashmere and Suede), Perfecting Concealer (Chenille and Cashmere), and Blusher (Scandalous).

**EYES:** Splurge (Amused and Faithful), Pencil Eyeliner (Perfect), Fiber Lashes, and Brow Palette (Dark Brunette/Dark).

**LIPS:** Lip Gloss (Lunar).



### AIMEE P24

**FACE:** Liquid Foundation (Taffeta), Powder Foundation (Organza), Perfecting Concealer (Organza and Scarlet), Bronzer (Malibu), Powder Luminizer (Pearly), and Blusher (Seductive).

**EYES:** Splurge (Victorious, Charming, and Assertive), Brow Liner (Medium), Brow Gel (Medium), and Fiber Lashes.

**LIPS:** Lip Gloss (Lunar) and Lip Liner (Pouty and Prudent).



### MIMI P26

**FACE:** Liquid Foundation (Velvet), Powder Foundation (Velvet and Georgette), Perfecting Concealer (Chiffon), and Blusher (Scandalous).

**EYES:** Addiction 1 (Elated, Brassy, Chipper, Zealous, and Forthright), Fiber Lashes, and Brow Palette (Brunette).

**LIPS:** Lip Gloss (Luxe).



### MELANIE P26

**FACE:** Liquid Foundation (Satin and Chiffon), Sculpting Trio (Medium), Perfecting Concealer (Velour and Chiffon), Powder Luminizer (Benevolent), and Blusher (Sweet).

**EYES:** Splurge (Victorious and Magnificent), Pencil Eyeliner (Peppy and Perfect), Addiction 2 (Blissful, Romantic, and Honorable), Brow Liner (Light and Medium), Brow Gel (Light), and Fiber Lashes.

**LIPS:** Lipstick (Pretentious), Lip Gloss (Lavish), and Lip Liner (Primal).





#### LIANNE P26

**FACE:** Liquid Foundation (Satin), Powder Foundation (Georgette), Perfecting Concealer (Chiffon), Powder Luminizer (Lustrous), and Blusher (Sweet).

**EYES:** Powder Luminizer (Benevolent), Addiction 3 (Cheeky, Irate, Flippant, and Smitten), Fiber Lashes, and Brow Palette (Brunette).

**LIPS:** Lip Liner (Pouty) and Lipstick (Affluent).



#### NICHOLE P26 & BACK COVER

**FACE:** Liquid Foundation (Velour), Powder Foundation (Velour), Perfecting Concealer (Velour), Mineral Concealer (Foxy), Bronzer (Sunset), and Blusher (Seductive).

**EYES:** Addiction 4 (Cheerful, Triumphant, and Brave), Fiber Lashes, and Brow Liner (Light).

**LIPS:** Splash (Soulful).



#### IFY P26

**FACE:** Liquid Foundation (Georgette and Suede), Powder Foundation (Georgette), Perfecting Concealer (Cypress), Powder Luminizer (Pearly), and Addiction 5 (Vintage and Sarcastic).

**EYES:** Splurge (Unapologetic), Liquid Eyeliner (Perfect), Addiction 5 (Vintage, Sarcastic, and Fearless), Brow Liner (Dark), Brow Gel (Dark), and Fiber Lashes.

**LIPS:** Lipstick (Well-To-Do) and Lip Liner (Proper).



#### MELANIE P28

**FACE:** Liquid Foundation (Chiffon), Powder Foundation (Chiffon and Taffeta), Perfecting Concealer (Taffeta and Chiffon), Sculpting Trio (Medium), Bronzer (Malibu) Powder Luminizer (Lustrous), and Blusher (Sweet).

**EYES:** Splurge (Bittersweet), Addiction 4 (Tender, Secretive, and Brave), Addiction 3 (Tickled), Fiber Lashes, and Brow Palette (Blond).

**LIPS:** Lip Liner (Pouty), Lipstick (Conceited), and Bonbons (Chocolate Truffle).



#### AIMEE P28

**FACE:** Liquid Foundation (Taffeta), Powder Foundation (Taffeta and Cashmere), Perfecting Concealer (Organza), and Blusher (Sweet).

**EYES:** Addiction 5 (Victorious), Addiction 1 (Elated, Chipper, and Fortright), Fiber Lashes, and Brow Palette (Brunette).

**LIPS:** Lip Gloss (Luxe) and Lip Liner (Pouty).



#### SOED P28

**FACE:** Liquid Foundation (Chenille), Powder Foundation (Cashmere, Chenille, and Suede), Perfecting Concealer (Chenille), Powder Luminizer (Pearly), and Blusher (Scandalous).

**EYES:** Addiction 4 (Cheerful, Triumphant, and Tender), Fiber Lashes, and Brow Palette (Dark Brunette/Black).

**LIPS:** Bonbons (Red Velvet Cake).



#### ANN P30

**FACE:** Liquid Foundation (Velour), Powder Foundation (Velour), Perfecting Concealer (Scarlet and Velour), Sculpting Trio (Medium), and Blusher (Stunning).

**EYES:** Pencil Eyeliner (Pristine and Prim), Addiction 3 (Smitten, Irate, Determined, and Ecstatic), Brow Liner (Medium), Brow Gel (Medium), and Fiber Lashes.

**LIPS:** Lip Gloss (Lucid) and Lip Liner (Punchy and Pouty).



#### LISA P31

**FACE:** Liquid Foundation (Taffeta), Powder Foundation (Taffeta and Charmuse), Perfecting Concealer (Taffeta), Blusher (Sweet), and Splurge (Hopeful).

**EYES:** Powder Foundation (Scarlet), Splurge (Victorious, Hopeful, and Magnificent), Fiber Lashes, Pencil Eyeliner (Pristine), Brow Liner (Medium), and Brow Gel (Medium).

**LIPS:** Lip Gloss (Lucid) and Lip Liner (Punchy and Prudent).



#### IFY P33

**FACE:** FACE: Glorious, Liquid Foundation (Georgette), Powder Foundation (Georgette), and Blusher (Stunning).

**EYES:** Addiction 5 (Vindictive, Victorious, and Brilliant), Addiction 3 (Irate), Brow Liner (Dark), and Fiber Lashes.

**LIPS:** Liquid Lipstick (Spontaneous).



#### LISA P34

**FACE:** Liquid Foundation (Taffeta), Perfecting Concealer (Taffeta), Powder Luminizer (Opaline), Cream to Powder Luminizer (Benevolent), and Blusher (Seductive).

**EYES:** Splurge (Tenacious and Proud), Addiction 1 (Elated), Fiber Lashes, and Brow Palette (Brunette).

**LIPS:** Splash (Stoic).



#### TINA P35

**FACE:** Liquid Foundation (Satin), Powder Foundation (Satin, Chiffon, and Cashmere), Perfecting Concealer (Satin and Chiffon), Mineral Concealer (Fierce), and Blusher (Sweet).

**EYES:** Pigment (Dignified and Provoked), Addiction 4 (Brave), and Brow Palette (Dark Brunette/Black), Fiber Lashes.

**LIPS:** Lipstick (Swagger).



#### NICOLE P36

**FACE:** Liquid Foundation (Taffeta), Perfecting Concealer (Taffeta and Velour), Mineral Concealer (Fierce), and Bronzer (Malibu).

**EYES:** Addiction 4 (Arrogant and Secretive) Fiber Lashes, and Pigment (Beautiful).

**LIPS:** Lipstick (Top Notch).



#### LIANNE P37

**FACE:** Liquid Foundation (Satin), Perfecting Concealer (Chiffon), Powder Luminizer (Lustrous), and Blusher (Seductive).

**EYES:** Pigments (Beautiful and Provoked), Addiction 1 (Forthright and Chipper), Fiber Lashes, and Brow Palette (Brunette).

**LIPS:** Lip Liner (Prudent) and Bonbons (Chocolate Truffle).



#### LISA P39

**FACE:** Liquid Foundation (Taffeta), Powder Foundation (Taffeta and Charmeuse), Perfecting Concealer (Taffeta), Blusher (Sweet), and Splurge (Hopeful).

**EYES:** Splurge (Victorious and Hopeful), Fiber Lashes, Pencil Eyeliner (Pristine), Brow Liner (Medium), and Brow Gel (Medium).

**LIPS:** Lip Gloss (Lucid) and Lip Liner (Prudent).



#### CECILIA P40

**FACE:** Liquid Foundation (Velour), Powder Foundation (Velour), Perfecting Concealer (Velour), Powder Luminizer (Benevolent and Opaline), and Blusher (Seductive).

**EYES:** Splurge (Bittersweet), Addiction 4 (Tender), Addiction 2 (Honorable and Blissful), Brow Liner (Dark), Fiber Lashes, and Brow Palette (Brunette).

**LIPS:** Lip Gloss (Lucid) and Lip Liner (Prudent).



#### NICHOLE S. P42

**FACE:** Liquid Foundation (Organza), Powder Foundation (Organza), Perfecting Concealer (Organza and Scarlet), Sculpting Trio (Light), and Blusher (Sweet).

**EYES:** Splurge (Extravagant and Victorious), Pigments (Angelic and Provoked), Pencil Eyeliner (Perfect), Addiction 4 (Arrogant), Brow Liner (Medium), Brow Gel (Light), and Fiber Lashes.

**LIPS:** Lip Stain (Serendipitous).



#### MIMI P44

**FACE:** Liquid Foundation (Satin and Velvet), Powder Foundation (Taffeta), Behold Setting Powder, Powder Luminizer (Benevolent), and Blusher (Seductive).

**EYES:** Splurge (Victorious and Extravagant), Pigments (Provoked and Angelic), Pencil Eyeliner (Perfect), Addiction 4 (Arrogant), Powder Luminizer (Benevolent), Brow Liner (Medium), and Fiber Lashes.

**LIPS:** Lipstick (Prodigal), Lip Gloss (Lippy), and Lip Liner (Peachy).

**BODY:** Body Bronzer (Malibu).

### TOOLS



#### TINA P48

**FACE:** Royalty Night Cream, Liquid Foundation (Satin), Powder Foundation (Satin), Perfecting Concealer (Satin and Chiffon), Mineral Concealer (Fierce), Behold Setting Powder, Powder Luminizer (Benevolent), and Blusher (Seductive).

**EYES:** Splurge (Proud), Addiction 4 (Tender, Cheerful, Triumphant, Arrogant, and Secretive), Fiber Lashes, Liquid Eyeliner (Proper), and Brow Palette (Dark Brunette/Black).

**LIPS:** Lipstick (Swanky).

### COLLECTIONS



#### NICOLE P54

**FACE:** Liquid Foundation (Velour), Powder Foundation (Scarlet and Organza), Perfecting Concealer (Scarlet), and Blusher (Stunning).

**EYES:** Splurge (Victorious), Pigments (Tickled, Curious, Determined, and Glamorous), Pencil Eyeliner (Peppy and Pristine), Fiber Lashes, and Brow Palette (Brunette).

**LIPS:** Lip Gloss (Lucid) and Lip Liner (Pouty).

INDEX

Line Extensions . . . . .	1	Moodstruck Minerals Stiff Upper Lip Lip Stain. . . . .	41
Best Sellers. . . . .	1		
New Releases . . . . .	2	<b>BODY</b>	
New Collections . . . . .	2	Beachfront Self-Tanning Spray. . . . .	46
<b>SKIN</b>		Beachfront Self-Tanning Body Lotion. . . . .	46
Younique Royalty Pore Purifying Cleanser . . . . .	5	Beachfront Body Bronzer . . . . .	46
Younique Royalty Moisture Boosting Gentle Cleanser. . . . .	5	Beachfront Body Applicator . . . . .	46
Younique Royalty Shine Cleansing Cloths . . . . .	5	<b>TOOLS</b>	
Younique Royalty Time Correcting Night Cream. . . . .	6	Blending Buds . . . . .	49
Younique Royalty Rose Water Toning Spritz. . . . .	6	Precision Tweezers. . . . .	49
Younique Royalty Uplift Beauty Serum. . . . .	6	Lip Brush. . . . .	49
Younique Royalty Instant Lifting Serum. . . . .	6	Precision Pencil Sharpener . . . . .	49
Younique Royalty Renewing Day Cream. . . . .	7	Precision Eyelash Curler . . . . .	49
Younique Royalty Hydrating Day Cream . . . . .	7	Powder/Concealer Brush . . . . .	50
Younique Royalty Divine Daily Moisturizer. . . . .	8	Fan Brush . . . . .	50
Younique Royalty Detoxifying Mask . . . . .	8	Brow Artist Brush . . . . .	50
<b>FACE</b>		Foundation Brush . . . . .	51
Touch Mineral Liquid Foundation . . . . .	11	Blusher Brush. . . . .	51
Touch Mineral Skin Perfecting Concealer. . . . .	12	Powder Puff Brush . . . . .	51
Touch Glorious Face Primer . . . . .	13	Contour Brush . . . . .	51
Moodstruck Minerals Concealer. . . . .	13	Concealer Brush . . . . .	51
Touch Mineral Cream Foundation. . . . .	14	Liquid Foundation Brush. . . . .	51
Touch Mineral Pressed Powder Foundation. . . . .	14	Liner/Shader Brush. . . . .	52
BB Flawless Complexion Enhancer . . . . .	14	Deluxe Eye Brush . . . . .	52
Touch à la mode Cream to Powder Luminizer. . . . .	15	Crease Brush . . . . .	52
Touch à la mode Powder Luminizer . . . . .	15	Cream Shadow Brush . . . . .	52
Touch à la mode Cream Luminizer. . . . .	16	Angled Shadow/Sponge Brush . . . . .	52
Beachfront Bronzer. . . . .	17	<b>COLLECTIONS</b>	
Moodstruck Minerals Pressed Blusher . . . . .	18	Eye of the Beholder . . . . .	55
Sculpting Trio. . . . .	18	The Full Flourish . . . . .	55
Touch Behold Setting Spray . . . . .	19	Glamour Grab Bag . . . . .	56
Touch Behold Translucent Setting Powder. . . . .	20	About Face. . . . .	56
<b>LIPS AND EYES</b>		Clean Slate. . . . .	57
Splurge Cream Shadow. . . . .	23	Beauty Sleep . . . . .	57
Moodstruck Minerals Pigment Powder . . . . .	25	Defend Innocence . . . . .	58
Moodstruck Eye Primer. . . . .	25	Get The Looks . . . . .	59
Moodstruck Addiction Shadow Palettes. . . . .	26	Presenter Kit. . . . .	64
Moodstruck Precision Pencil Eyeliner . . . . .	27		
Moodstruck Precision Liquid Eyeliner . . . . .	27		
Moodstruck Brow Obsession Palette. . . . .	28		
Moodstruck Precision Brow Liner . . . . .	29		
Moodstruck Precision Brow Gel . . . . .	29		
Brow Stencils . . . . .	29		
Moodstruck 3D Fiber Lashes+. . . . .	32		
Moodstruck Splash Liquid Lipstick . . . . .	33		
Moodstruck Opulence Lipstick . . . . .	35		
Lip Bonbons Tinted Lip Balm. . . . .	37		
Moodstruck Precision Pencil Lip Liner . . . . .	38		
Moodstruck Lip Exfoliator. . . . .	38		
Moodstruck Minerals Lucrative Lip Gloss. . . . .	39		



LOVE IT. SHARE IT.  
LIVE IT.

Living the Younique lifestyle is a commitment to uplifting, empowering, and validating women everywhere. It's devoting yourself to helping a global family of women realize their potential for personal growth and financial reward. Together, we make a beautiful team.

Are you ready to live Younique?

Contact your Presenter to join the Younique Family.

PRESENTER KIT! \*

Start your business out **strong.**  
\* Presenter Kit contents are subject to change.



FIND MORE  
ONLINE

Shop our full product lineup, learn about monthly Customer Kudos specials, get expert beauty tips and more at [www.youniqueproducts.com](http://www.youniqueproducts.com).





younique.

For more information, contact:

## HOST A VIRTUAL PARTY

**TIME TO PARTY!** Hosting Virtual Parties is the perfect way for you and your friends to share Younique—and to earn a little something in return. Spread the love with a party, and watch your business grow.



UK SPRING 2017 CATALOG (10 PACK) 68-PAGE



UK-85010-07



[www.youniqueproducts.com](http://www.youniqueproducts.com)

